



Automated Enforcement (ASE)

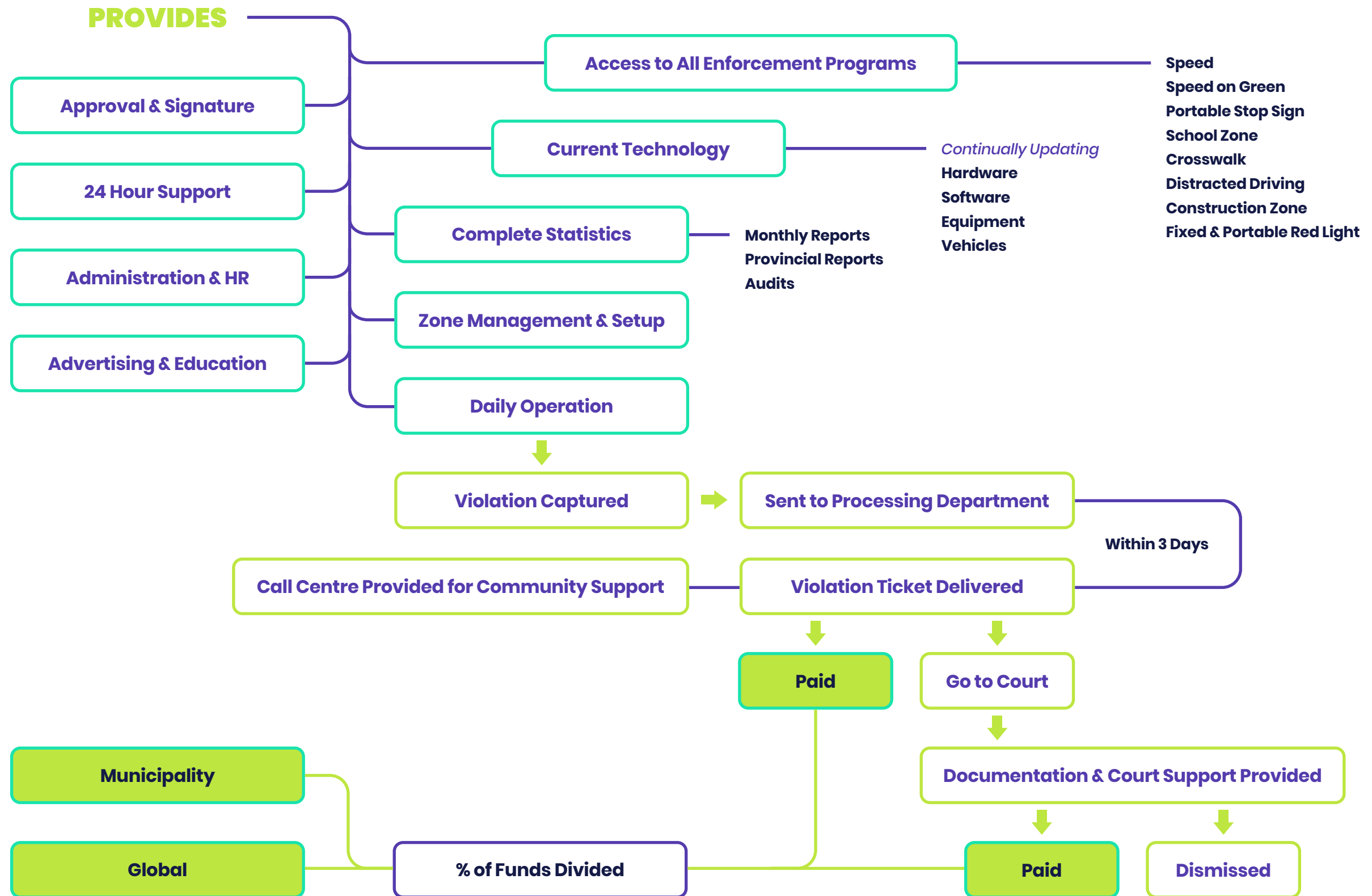
June 13, 2023





Global Saves Lives

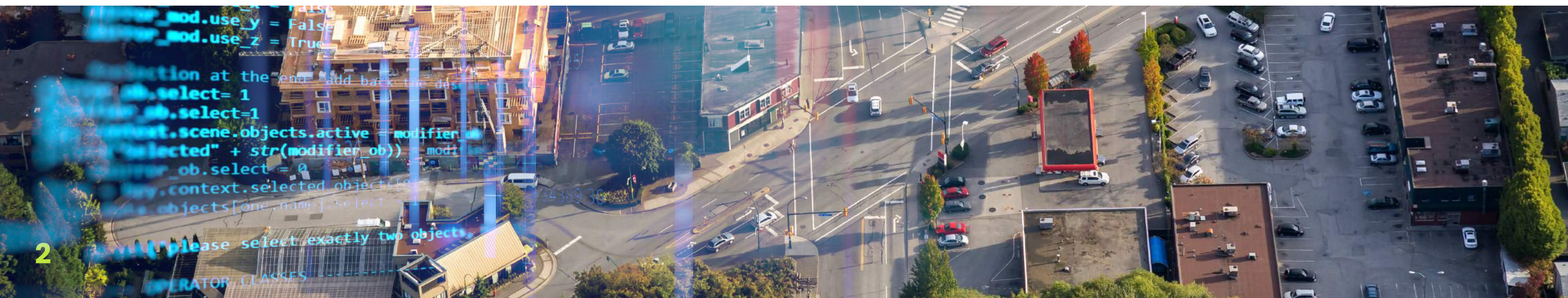
Full Turn-Key Solution



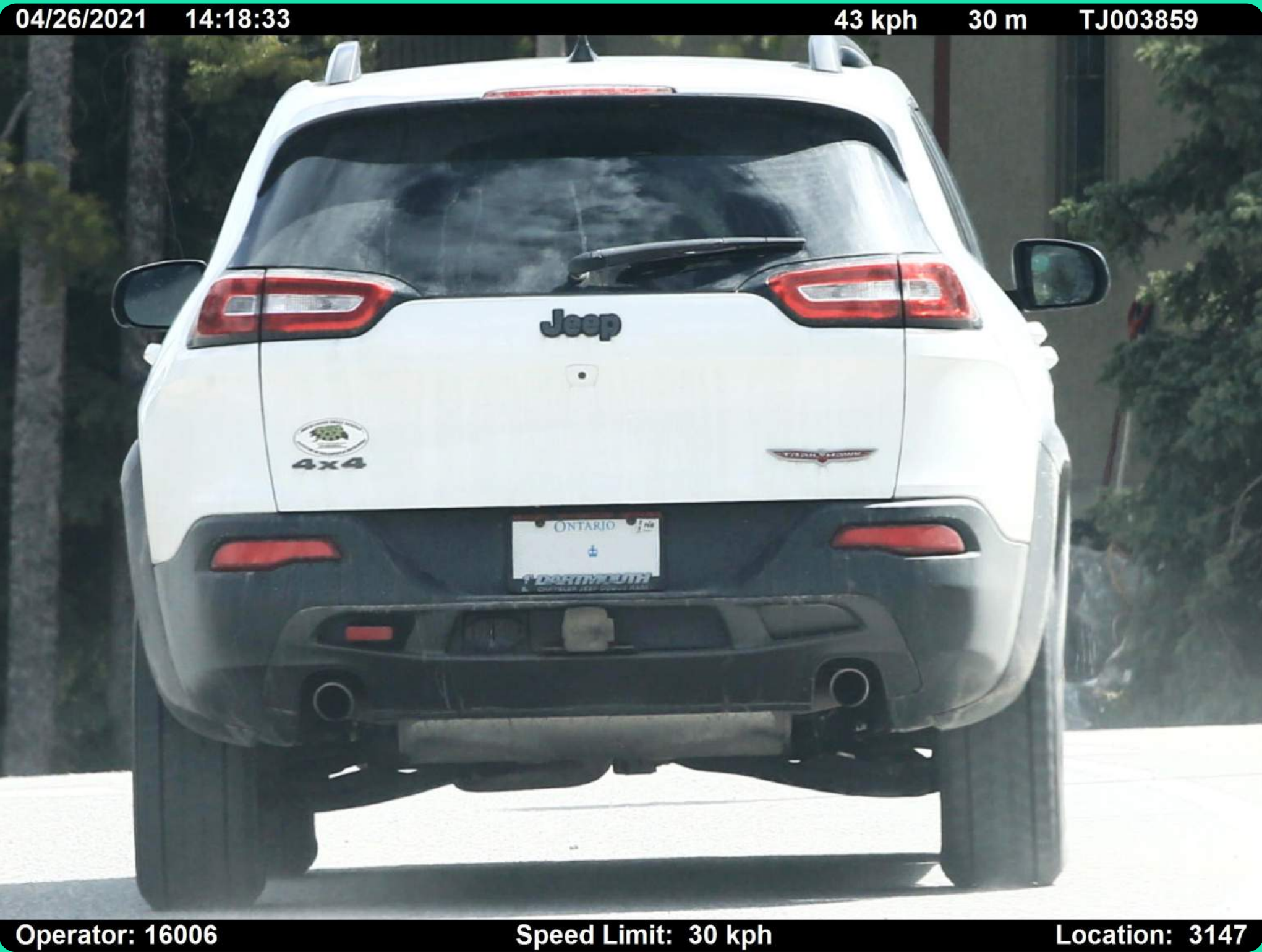
Community Safety Zone

Use of automated speed enforcement system authorized:

- a) In a community safety zone where the speed limit is less than 80kph**
- b) In a school zone**

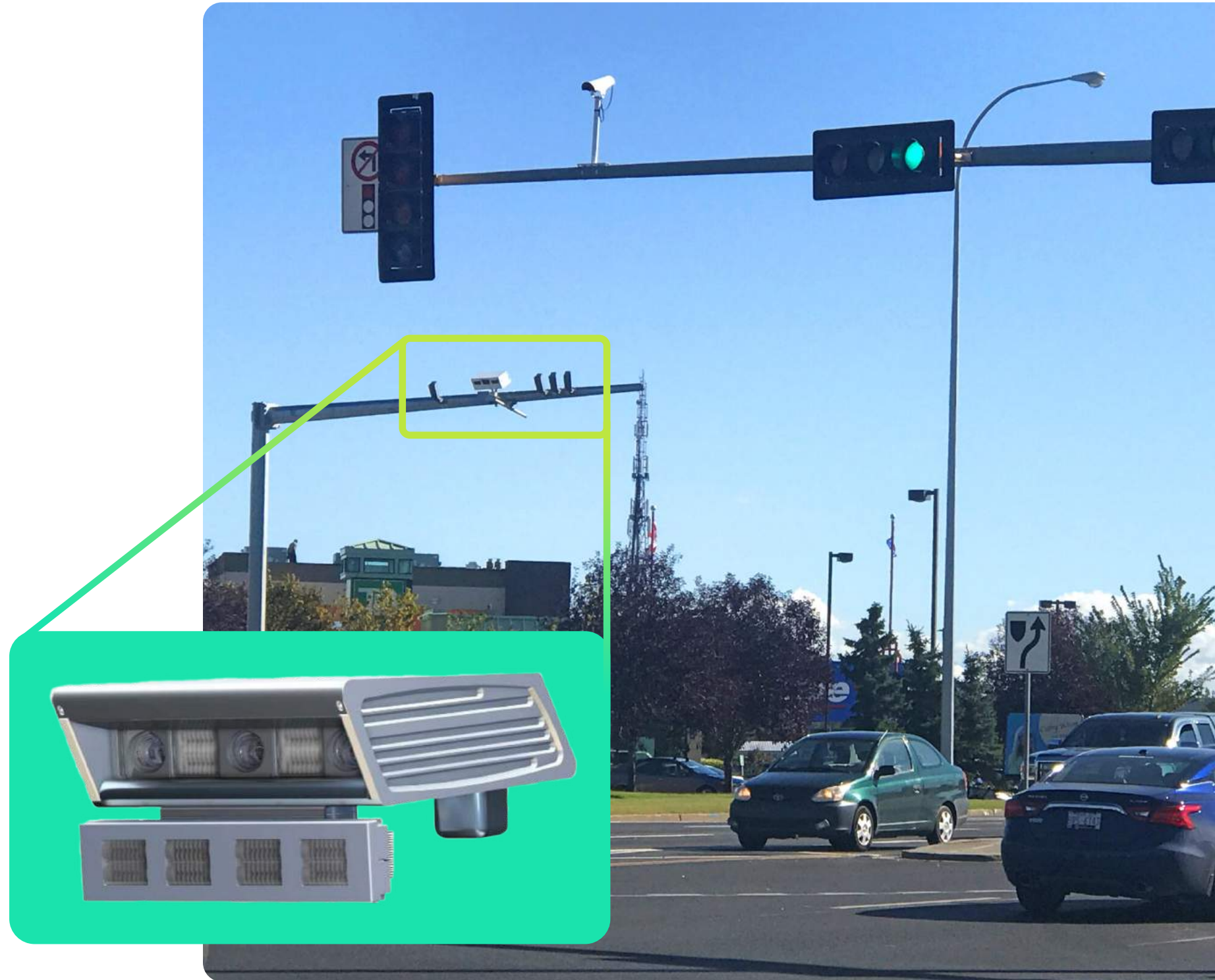


School Example



Fixed Red Light Camera

- **Speed on Green**
- **Stop**
- **Loopless**
- **No Flash**
- **Amber Alert**
- **Blacklist**



Portable Solutions

All technology systems built in-house, customizable to any needs

G2h:

- **Handheld, 10 pounds**
- **Can be utilized in smaller vehicles**

G2lr:

- **Long range, 400mm lens for longer zone coverage or;**
- **200mm lens for shorter zones such as schools**

G2r:

- **Remote, battery operated, approximately 1 cubic foot in size and weighs 15lbs**
- **Can be operated out of various types of roadside boxes or mounted on an existing post or pole**

G2rv:

- **Remote video-based system**
- **360° Coverage, 400m range**
- **Similar to the G2r, this system has many acquisition unit possibilities**

Processing Centre

- **Electronic Back Office (EBO) for violation ticket processing**
- **Expandable & adaptable**
- **Can process multiple types of violations including parking, failing to stop for school bus, etc.**
- **Meets or exceeds all provincial requirements**
- **Call centre tracking system**
- **Operational details are retained for audit purposes and can be immediately retrieved**
- **Court calendar provides information regarding court briefs, trial dates and payment history**
- **All statistical and financial reports**
- **Updated daily**

AMPS Software

- **Administrative Monetary Penalty System (AMPS)**
- **Alternative to the Provincial Offences Court System**
- **Since July 1, 2022, ASE can be included in an AMPS**
- **Provincial Offences Officer, Screening Officer, Hearing Officer**
- **Global offers a customized software solution for an AMPS**
- **Developed to meet Government of Ontario reporting requirements**
- **Supports any bylaws in a municipality program, including ASE, parking, and red-light camera enforcement**
- **Facilitates digital and automated batch processing of large numbers of plates and e-tickets**

Global Traffic Counters

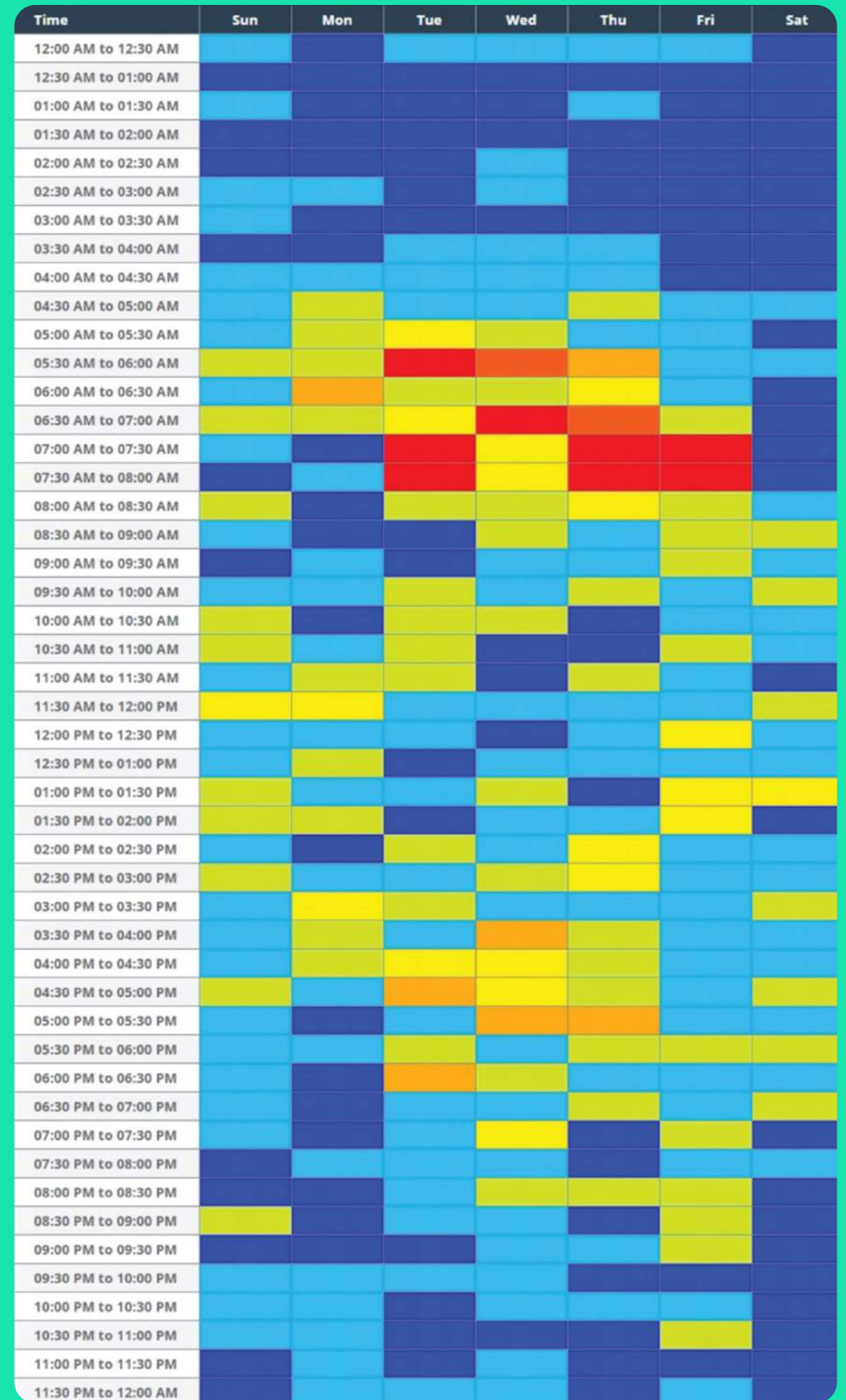
High Risk



Medium Risk



Low Risk



2017

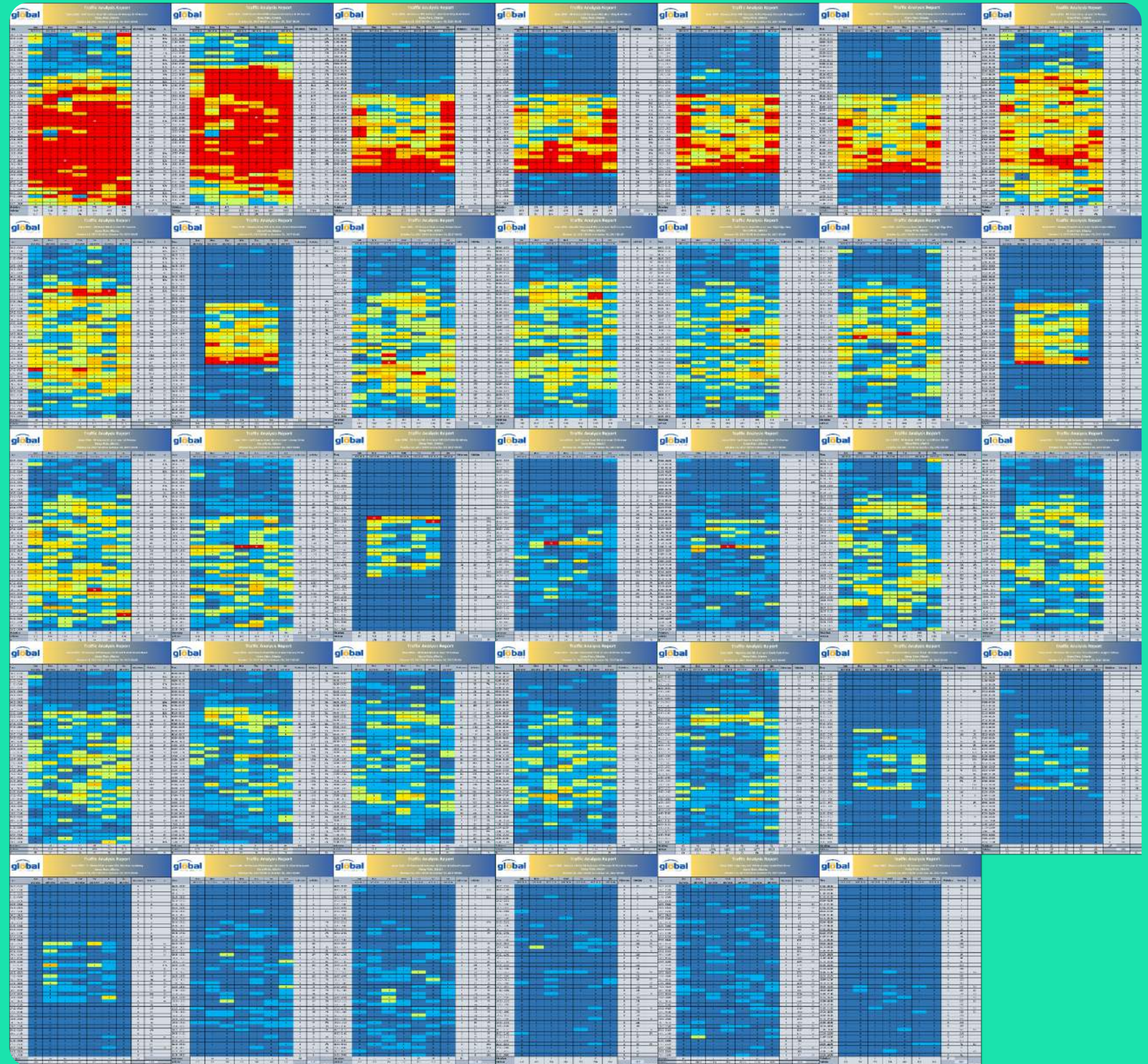
**Deployed for 1 full week
(24hr/day)**

**Demonstrates speed
risk analysis**

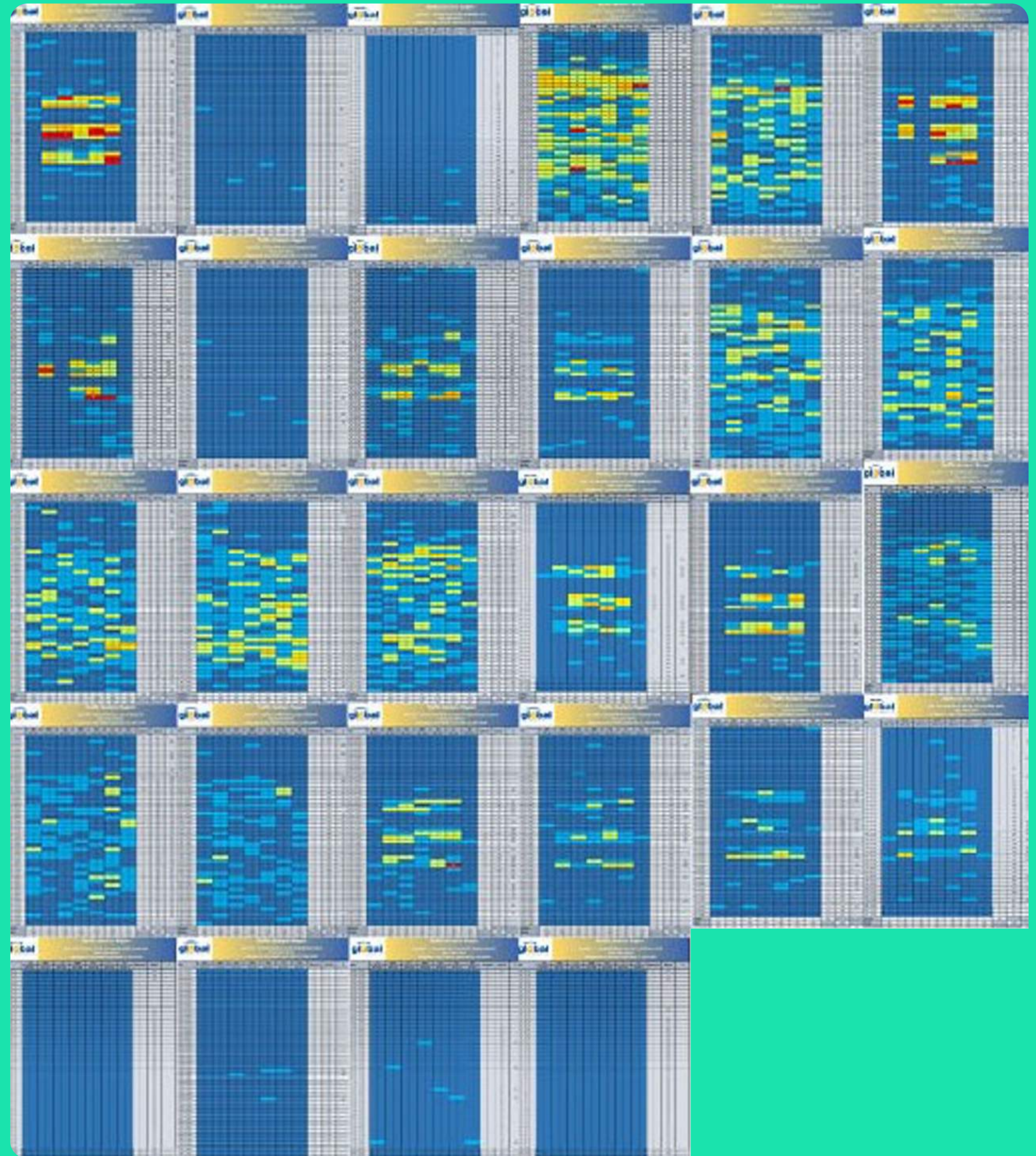
**Police of Jurisdiction
can utilize for data-
driven enforcement**

**Response to
community concerns**

**Measure program
success**



2021



Public Statistics Website

stats.globaltrafficgroup.com/slavelake

TOWN OF SLAVE LAKE

Map Satellite

ZONES IN COMMUNITY

<input checked="" type="checkbox"/>	SPEED	<input checked="" type="checkbox"/>	SCHOOL	<input checked="" type="checkbox"/>
<input checked="" type="checkbox"/>	PLAYGROUND	<input checked="" type="checkbox"/>	RED LIGHT	<input checked="" type="checkbox"/>
<input checked="" type="checkbox"/>	STOP SIGN	<input checked="" type="checkbox"/>	NO STATS	<input checked="" type="checkbox"/>

- ZONE 1901**
6 Avenue SW EB at or near St Mary of the Lake School
- ZONE 1902**
6 Avenue SW WB at or near St Mary of the Lake School
- ZONE 1905**
6 Avenue NE WB at or near CJ Schurter School
- ZONE 1906**
6 Avenue NE EB at or near CJ Schurter School
- ZONE 1907**
6 Avenue NW EB at or near EG Wahlstrom School
- ZONE 1908**
6 Avenue NW WB at or near EG Wahlstrom School
- ZONE 1909**
Main Street NW SB at or near EG Wahlstrom School
- ZONE 1910**
Main Street NW NB at or near EG Wahlstrom School

DATA DISCLAIMERS AND LIMITATIONS
This data was collected digitally and although we do our best to ensure it is accurate and useful, we cannot be liable for any omissions or errors. Therefore, we release this data with the following Disclaimer of Warranty and Limitation of Liability.

CONTACT
General Inquiries: enforcement@slavelake.ca
Ticket Inquiries: 1-877-998-4327

Global TRAFFIC GROUP

Public Statistics Website

- **Select individual zone for more information**

The screenshot displays the website interface for the Town of Slave Lake. At the top, the URL is stats.globaltrafficgroup.com/slavelake. The Town of Slave Lake logo is visible. The main content area features a map with a pop-up window for Zone 1943. The pop-up provides the following details:

- Zone 1943**
- Location:** Highway 2 EB at or near Cornerstone Centre
- Traffic Flow:** Eastbound
- Type:** Speed Zone
- Documents:** Site Justification Sheet
- Reports:** Risk Analysis

Below the map, a sidebar titled "ZONES IN COMMUNITY" lists various zones with their locations:

- ZONE 1901**: 6 Avenue SW EB at or near St Mary of the Lake School
- ZONE 1902**: 6 Avenue SW WB at or near St Mary of the Lake School
- ZONE 1905**: 6 Avenue NE WB at or near CJ Schurter School
- ZONE 1906**: 6 Avenue NE EB at or near CJ Schurter School
- ZONE 1907**: 6 Avenue NW EB at or near EG Wahlstrom School
- ZONE 1908**: 6 Avenue NW WB at or near EG Wahlstrom School
- ZONE 1909**: (Location partially obscured)

At the bottom of the page, there are sections for "DATA DISCLAIMERS AND LIMITATIONS" and "CONTACT".

DATA DISCLAIMERS AND LIMITATIONS
This data was collected digitally and although we do our best to ensure it is accurate and useful, we cannot be liable for any omissions or errors. Therefore, we release this data with the following Disclaimer of Warranty and Limitation of Liability.

CONTACT
General Inquiries: enforcement@slavelake.ca
Ticket Inquiries: 1-877-998-4327

The Global Traffic Group logo is located in the bottom right corner.

Public Statistics Website

- **Select zone justification sheet**

Town of Slave Lake - Automated Traffic Enforcement - Site Justification

Zone: **1943** Monitoring Traffic: **Highway 2 EB at/near Cornerstone Shopping Centre**

Zone Type: **Speed**

Speed Limit: **60 Km/h**

One or more of these criteria must be met before automated traffic enforcement technology is deployed at a specific site. (Check the appropriate box(s) for zone justification)

- High-risk locations are those where the safety of citizens or police officers would be at risk through conventional enforcement methods;
- High-frequency locations are those where data indicates motorists are ignoring or breaking traffic laws on an ongoing basis;
- High-collision locations are those where data indicates a greater frequency of collisions;
- Where conventional enforcement is unsafe or ineffective;
- Areas or intersections with a history of collisions;
- Areas or intersections with an identifiable, documented history of speeding problems;
- Intersections with an identifiable, documented history of red light offences;
- School and playground zones or areas;
- Construction zones;
- Areas where the public or a community has expressed concerns related to speeding;
- Other:

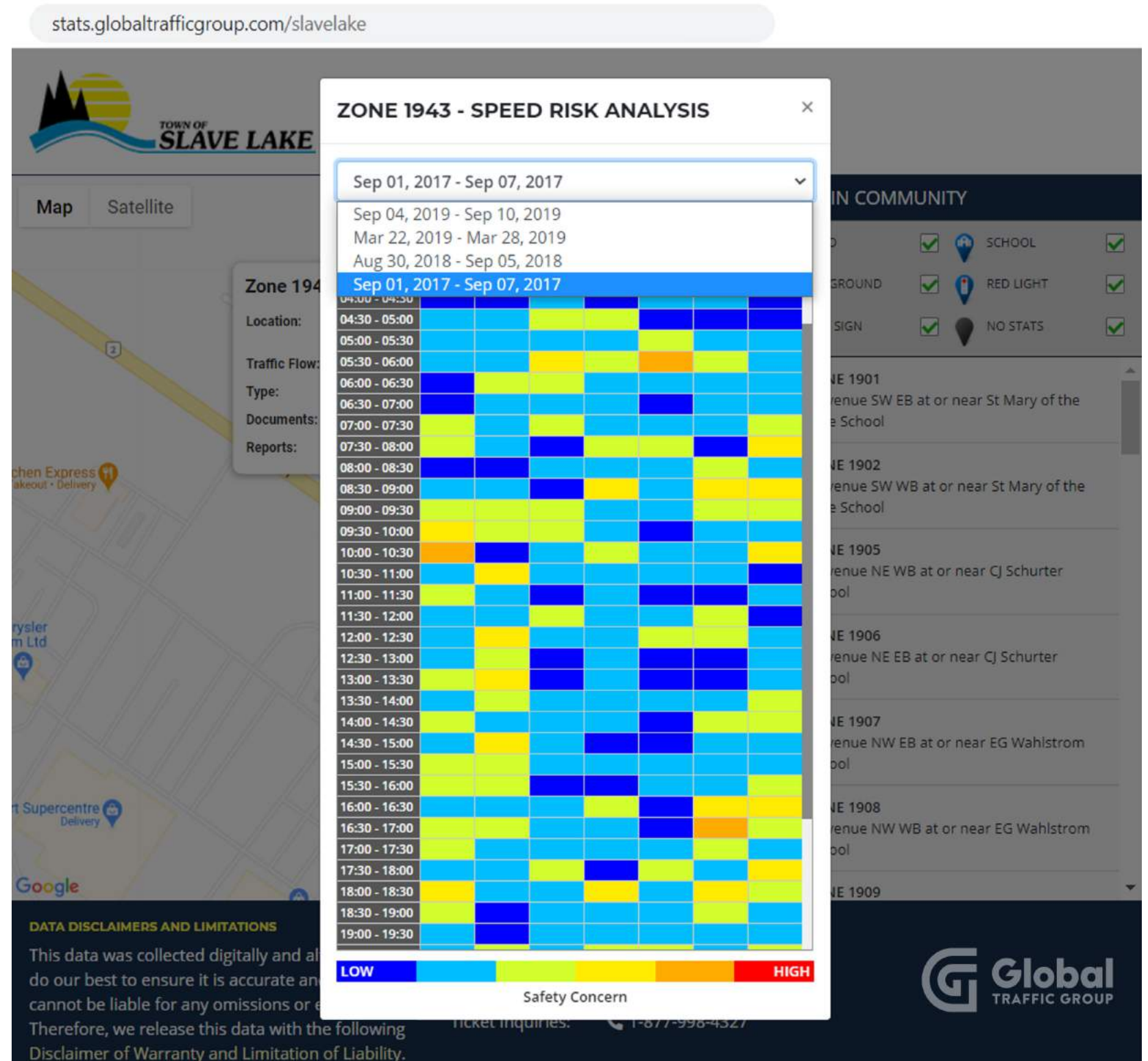

S/Sgt John Spaans
RCMP Representative

2019/05/03

Date

Public Statistics Website

- Risk analysis view
- Select deployment



Public Statistics Website

- **Select another deployment to see program success**

stats.globaltrafficgroup.com/slavelake

TOWN OF SLAVE LAKE

Map Satellite

Zone 1943

Location:

Traffic Flow:

Type:

Documents:

Reports:

ZONE 1943 - SPEED RISK ANALYSIS

Sep 04, 2019 - Sep 10, 2019

Time	Sun	Mon	Tue	Wed	Thu	Fri	Sat
03:00 - 03:30	Blue	Blue	Blue	Blue	Blue	Blue	Blue
03:30 - 04:00	Blue	Blue	Blue	Blue	Blue	Blue	Blue
04:00 - 04:30	Blue	Blue	Blue	Blue	Blue	Blue	Blue
04:30 - 05:00	Blue	Blue	Blue	Blue	Blue	Blue	Blue
05:00 - 05:30	Blue	Blue	Blue	Blue	Blue	Blue	Blue
05:30 - 06:00	Blue	Blue	Blue	Blue	Blue	Blue	Blue
06:00 - 06:30	Blue	Blue	Yellow	Blue	Yellow	Blue	Blue
06:30 - 07:00	Blue	Blue	Blue	Blue	Yellow	Blue	Blue
07:00 - 07:30	Blue	Blue	Blue	Blue	Blue	Blue	Blue
07:30 - 08:00	Blue	Blue	Blue	Blue	Blue	Blue	Blue
08:00 - 08:30	Blue	Blue	Blue	Blue	Blue	Blue	Blue
08:30 - 09:00	Blue	Blue	Blue	Blue	Blue	Blue	Blue
09:00 - 09:30	Blue	Blue	Blue	Blue	Blue	Blue	Blue
09:30 - 10:00	Blue	Blue	Blue	Blue	Blue	Blue	Blue
10:00 - 10:30	Blue	Blue	Blue	Blue	Blue	Blue	Blue
10:30 - 11:00	Blue	Blue	Blue	Blue	Blue	Blue	Blue
11:00 - 11:30	Yellow	Blue	Blue	Blue	Blue	Blue	Blue
11:30 - 12:00	Blue	Blue	Blue	Blue	Blue	Blue	Blue
12:00 - 12:30	Yellow	Blue	Blue	Blue	Blue	Blue	Blue
12:30 - 13:00	Blue	Blue	Blue	Blue	Blue	Blue	Blue
13:00 - 13:30	Blue	Blue	Blue	Blue	Blue	Blue	Blue
13:30 - 14:00	Blue	Blue	Blue	Blue	Blue	Blue	Blue
14:00 - 14:30	Blue	Yellow	Blue	Blue	Blue	Blue	Blue
14:30 - 15:00	Blue	Blue	Blue	Blue	Blue	Blue	Blue
15:00 - 15:30	Blue	Blue	Blue	Blue	Blue	Blue	Blue
15:30 - 16:00	Blue	Blue	Blue	Blue	Blue	Blue	Blue
16:00 - 16:30	Blue	Blue	Blue	Blue	Blue	Blue	Blue
16:30 - 17:00	Blue	Blue	Blue	Blue	Blue	Blue	Blue
17:00 - 17:30	Blue	Blue	Blue	Blue	Blue	Blue	Blue
17:30 - 18:00	Blue	Blue	Blue	Blue	Blue	Blue	Blue
18:00 - 18:30	Blue	Blue	Blue	Blue	Blue	Blue	Blue
18:30 - 19:00	Blue	Yellow	Blue	Blue	Blue	Blue	Blue
19:00 - 19:30	Blue	Blue	Blue	Blue	Blue	Blue	Blue

LOW HIGH Safety Concern

DATA DISCLAIMERS AND LIMITATIONS

This data was collected digitally and we do our best to ensure it is accurate and cannot be liable for any omissions or errors. Therefore, we release this data with the following Disclaimer of Warranty and Limitation of Liability.

Global TRAFFIC GROUP



Cost

- **If there are zero tickets issued in a month, then Global does not issue an invoice for that month**
- **We design the program so it should not be a budget item**
- **Ratepayers do not pay for the community's photo enforcement program**



Potential Next Steps

Timeline:

- **Deploy Global Traffic Counters**
- **Create benchmark data**
- **Review any current traffic data**
- **Identify community safety zones if needed**
- **Warning program**
- **Operational program**



Global
TRAFFIC GROUP

QUESTIONS?

David Steer, CEO

david.steer@globaltrafficgroup.com | +1 780 914 9720

Nick Wilson, Communications Lead

nick.wilson@globaltrafficgroup.com | +1 780 987 4949 Ext 106